
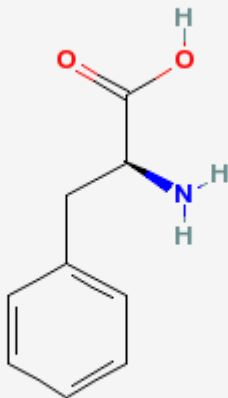


# Phenylalanine

Phe, F







An essential aromatic amino acid that is a precursor of MELANIN; DOPAMINE; noradrenalin (NOREPINEPHRINE), and THYROXINE.

Name	L-Phenylalanine <sup>1)</sup>
CAS No.	63-91-2
MeSH	 <a href="#">68010649</a>
Molecular Weight	165.18914 g/mol
Molecular Formula	C <sub>9</sub> H <sub>11</sub> NO <sub>2</sub>
XLogP	-1.4
Molecular Weight	165.189
m.p.	266-276°C
pK <sub>1</sub> (25°C)	2.16
pK <sub>2</sub> (25°C)	9.18



<jmol phe.pdb.gz></jmol>

## Links

- [Amino acid](#)
  - [Tyrosine](#)
  - [Tryptophan](#)
-  [Fmoc-Phe-OH](#)
- [フェニルアラニン](#)
-     

[Amino acid, Essential AA, JMol](#)

<sup>1)</sup>

(2S)-2-amino-3-phenyl-propanoic acid

From:

<https://bio.edu-wiki.org/> - BioWiki

Permanent link:

<https://bio.edu-wiki.org/en/phenylalanine>

Last update: **2013/06/09 10:10**

