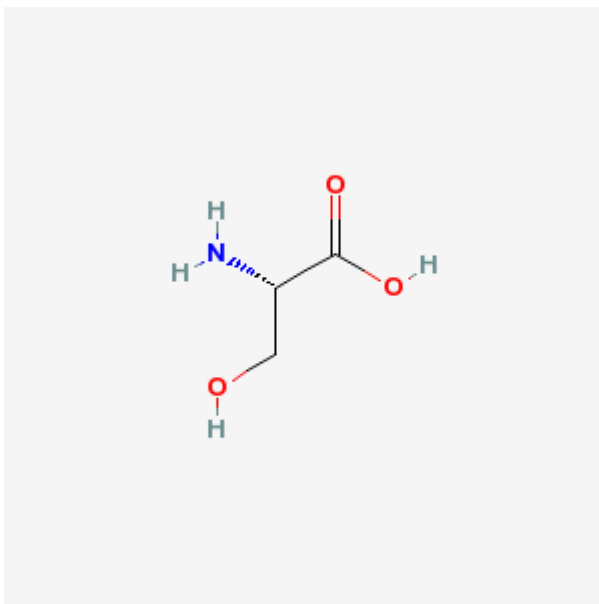


Serine

Ser, S

A non-essential [amino acid](#) occurring in natural form as the L-isomer. It is synthesized from [GLYCINE](#) or [THREONINE](#). It is involved in the biosynthesis of [PURINES](#); [PYRIMIDINES](#); and other amino acids.

Name	L-Serine ¹⁾
MeSH	68012694
CAS No.	56-45-1
Molecular Formula	C ₃ H ₇ NO ₃
XLogP	-4
Molecular Weight	105.093
m.p.	282°C
pK ₁ (25°C)	2.19
pK ₂ (25°C)	9.21



Links

- [Amino acid](#)
- [Serine](#)
- [Fmoc-Ser\(tBu\)-OH](#)

[Amino acid, Chemical structure](#)

¹⁾

(2S)-2-amino-3-hydroxy-propanoic acid

From:

<https://bio.edu-wiki.org/> - BioWiki

Permanent link:

<https://bio.edu-wiki.org/en/serine>

Last update: **2020/01/13 12:34**

