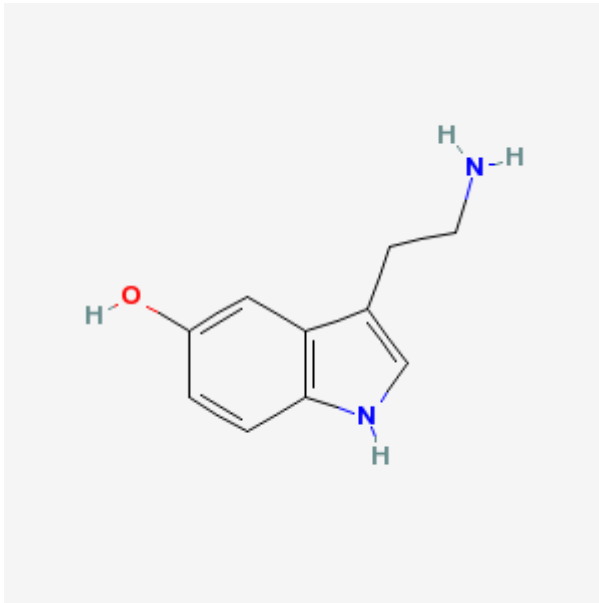


Serotonin

A biochemical messenger and regulator, synthesized from the essential amino acid L-TRYPTOPHAN. In humans it is found primarily in the central nervous system, gastrointestinal tract, and blood platelets. Serotonin mediates several important physiological functions including neurotransmission, gastrointestinal motility, hemostasis, and cardiovascular integrity. Multiple receptor families (RECEPTORS, SEROTONIN) explain the broad physiological actions and distribution of this biochemical mediator.



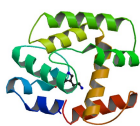
Related proteins



[3BRN - Ligand Binding Protein](#)

Crystal Structure Of Am182 Serotonin Complex

Ligand: SRO



[2QEH - Ligand Binding Protein](#)

Crystal Structure Of Anopheles Gambiae D7r4-Serotonin Complex

Ligand: SRO

Links

-  MeSH
- [Tryptophan](#)
- [セロトニン](#)

[Indoles](#), [Inflammation Mediators](#), [Amino acids](#), [Neurotransmission](#)

From:

<https://bio.edu-wiki.org/> - BioWiki

Permanent link:

<https://bio.edu-wiki.org/en/serotonin>

Last update: **2013/06/09 19:09**

