
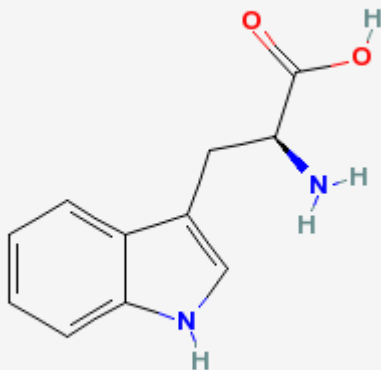


Tryptophan

Tryptophan, Trp, W

An essential amino acid that is necessary for normal growth in infants and for NITROGEN balance in adults. It is a precursor of INDOLE ALKALOIDS in plants. It is a precursor of SEROTONIN (hence its use as an antidepressant and sleep aid). It can be a precursor to NIACIN, albeit inefficiently, in mammals.

Name	L-Tryptophan ¹⁾
MeSH	 68014364
CAS No.	73-22-3
Molecular Weight	204.22518 g/mol
Molecular Formula	C ₁₁ H ₁₂ N ₂ O ₂
XLogP	-1.3
m.p.	280-285°C
pK ₁ (25°C)	2.43
pK ₂ (25°C)	9.44



<jmol trp.pdb.gz 250 250></jmol>

Links

- [Amino acid](#)
- [Aromatic amino acid](#)
 - [Phenylalanine](#)
 - [Tyrosine](#)
- [トリプトファン](#)
- =

[Amino acid](#), [Chemical structure](#), [Jmol](#)

¹⁾

(2S)-2-amino-3-(1H-indol-3-yl)-propanoic acid

From:

<https://bio.edu-wiki.org/> - BioWiki

Permanent link:

<https://bio.edu-wiki.org/en/tryptophan>

Last update: **2013/06/09 10:10**

