

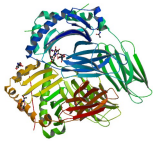
# MHC (主要組織適合複合体)

MHCは 'major histocompatibility complex' (主要組織適合複合体) の略で、免疫システムの中で異物として認識されるペプチド断片を提示する膜貫通タンパク質。



## 1HSA - Histocompatibility Antigen

The Three-Dimensional Structure Of Hla-B27 At 2.1 Angstroms Resolution Suggests A General Mechanism For Tight Peptide Binding To Mhc



## 1DLH - Histocompatibility Antigen

Crystal Structure Of The Human Class Ii Mhc Protein Hla-Dr1 Complexed With An Influenza Virus Peptide

リガンド: NAG|NDG

## Links

- 🌐 [Major Histocompatibility Complex](#) - RCSB PDB 'Molecule of the month'

[膜貫通タンパク質](#), [免疫](#), [ペプチド](#)

From:

<https://bio.edu-wiki.org/> - BioWiki

Permanent link:

<https://bio.edu-wiki.org/mhc>

Last update: 2013/06/09 18:08

